



TRANE®

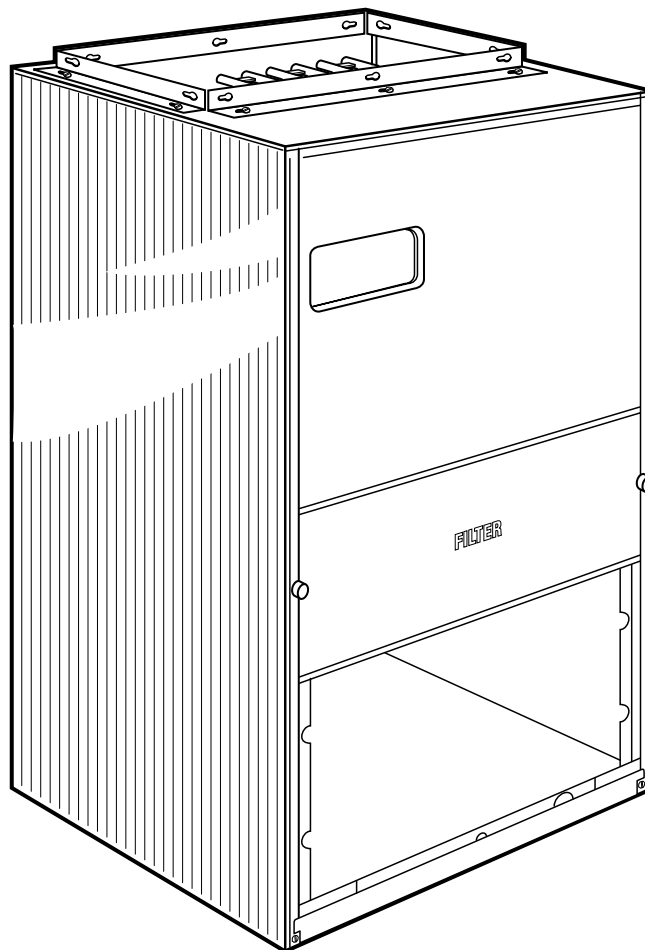
Vertical Upflow Air Handlers With Electric Heat 5, 8, 10 KW

2TFB3F18B1D05, 08, 10A

2TFB3F24B1D05, 08, 10B

4TFB3F18, 24, 30, 36A1D05, 08, 10A

2/4TFE3F25B1D05, 08, 10A



PUB. NO. 22-1753-06



Features and Benefits

2/4TFB3F Standard Equipment

- Shipped in vertical upflow, bottom return with front access & convertible to vertical upflow front return
- Tight cabinet - low leakage by design
- Attractive enamel finish
- R 4.2 – 1" insulation
- Exclusive easy clean coil and drain pan
- Easy to remove filters and blowers for easy cleaning and replacement
- Filter rack with throwaway filter
- Easy access electrical controls and hook-up
- 200/230 volt primary and 24 volt secondary transformer
- Built-in indoor fan delay function for increased efficiency. No kit required.
- Multi-speed blower
- Direct drive motor
- Factory installed electric heaters
- AccuTron™ refrigerant control
- Internal mounted expansion valve kits available
- Approved for modular or manufactured homes
- Factory installed service disconnect
- Internally enhanced finned coil tubing
- Primary and secondary drain connections
- Optional extended warranties

2/4TFE3F Standard Equipment

- Shipped in vertical upflow, bottom return with front access & convertible to vertical upflow front return
- Variable speed ECM motor
- Enhanced Comfort-R™
- Soft start – cycle-on speed is ramped up gradually to reduce sound and draft
- Low voltage terminal board
- Tight cabinet – low leakage by design
- Attractive enamel finish
- R 4.2 – 1" insulation
- Exclusive easy clean coil and drain pan
- Easy to remove filters and blowers for easy cleaning and replacement
- Filter rack with throw away filter
- Easy access electrical controls and hook-up
- 200/230 volt primary and 24 volt secondary transformer
- Built-in indoor fan delay function for increased efficiency. No kit required.
- Factory installed electric heaters
- Expansion valve refrigerant control
- Factory installed service disconnect
- Internally enhanced finned coil tubing
- Primary and secondary drain connections
- Approved for modular or manufactured homes
- Optional extended warranties

OPTIONAL EQUIPMENT FOR HEATING UNITS

Evaporator Defrost Control Kit	All Cooling Models	AY28X079 []
Evaporator Defrost Control Kit	All Heat Pump Models	AY28X084 []

Contents

Features and Benefits	2
General Data	4
Performance Data	9
Electrical Data	10
Dimensions	18



General Data

Product Specifications

MODEL	2TFB3F18B1D05A 4TFB3F18A1D05A		2TFB3F18B1D08A 4TFB3F18A1D08A		2TFB3F18B1D10A 4TFB3F18A1D10A	
RATED VOLTS/PH/HZ.	208/230/1/60		208/230/1/60		208/230/1/60	
RATINGS ①	See O.D. Specifications		See O.D. Specifications		See O.D. Specifications	
HEATER CAPACITY (Volts)	240v	208v	240v	208v	240v	208v
HEATER CAPACITY (BTUH)	16400	12300	26200	19700	32800	24600
POWER CONNECTION	230v	208v	230v	208v	230v	208v
Min. Brch. Cir. Ampacity ②	26	23	41	36	51	45
Recmd-Max. Overload Protection (amps)	30	25	45	40	60	45
INDOOR COIL - Type	PLATE FIN		PLATE FIN		PLATE FIN	
Rows - F.P.I.	3 - 14		3 - 14		3 - 14	
Face Area (sq. ft.)	2.43		2.43		2.43	
Tube Size (in.)	3/8		3/8		3/8	
Refrigerant Control	TXV-NB		TXV-NB		TXV-NB	
Drain Connection Size (In.) ③	3/4 PVC SLIP		3/4 PVC SLIP		3/4 PVC SLIP	
DUCT CONNECTIONS	See Outline Drawing		See Outline Drawing		See Outline Drawing	
INDOOR FAN - Type	Centrifugal		Centrifugal		Centrifugal	
Diameter - Width (In.)	10 x 8		10 x 8		10 x 8	
No. Used	1		1		1	
Speeds (No.)	2		2		2	
CFM vs. in. w.g.	See Fan Performance Table		See Fan Performance Table		See Fan Performance Table	
Motor HP - RPM	1/5 - 930		1/5 - 930		1/5 - 930	
F.L. Amps - L.R. Amps	1.0 / 1.4		1.0 / 1.4		1.0 / 1.4	
FILTER — Furnished?	Yes		Yes		Yes	
Type Recommended	Throwaway		Throwaway		Throwaway	
Hi Vel. (No.-Size-Thk.)	1 - 18 x 20 - 1 In.		1 - 18 x 20 - 1 In.		1 - 18 x 20 - 1 In.	
REFRIGERANT	R-22	R-410A	R-22	R-410A	R-22	R-410A
Ref. Line Connections	Brazed	Brazed	Brazed	Brazed	Brazed	Brazed
Line Size - Gas (in.)	5/8	1/2	5/8	1/2	5/8	1/2
Line Size - Liquid (in.)	1/4	3/8	1/4	3/8	1/4	3/8
DIMENSIONS (in.)	H X W X D		H X W X D		H X W X D	
Crated (H X W X D)	40-1/2 x 23 x 20-3/8		40-1/2 x 23 x 20-3/8		40-1/2 x 23 x 20-3/8	
Uncrated	See Outline Drawing		See Outline Drawing		See Outline Drawing	
WEIGHT (lbs.)	115 / 93		115 / 93		115 / 93	
Shipping - Net	115 / 93		115 / 93		115 / 93	

① These Air Handlers are A.R.I certified with various Split System Air conditioners and Heat Pumps (ARI STANDARD 210/240). Refer to the Split System Outdoor Unit Product Data Guides for performance data.

② Minimum Circuit Ampacity includes Blower Motor Amps

③ 3/4" Plastic Pipe (Ref.: ASTM 1785-76)



General Data

Product Specifications

MODEL	2TFB3F24B1D05B 4TFB3F24A1D05A		2TFB3F24B1D08B 4TFB3F24A1D08A		2TFB3F24B1D10B 4TFB3F24A1D10A	
RATED VOLTS/PH/HZ.	208/230/1/60		208/230/1/60		208/230/1/60	
RATINGS ①	See O.D. Specifications		See O.D. Specifications		See O.D. Specifications	
HEATER CAPACITY (Volts)	240v	208v	240v	208v	240v	208v
HEATER CAPACITY (BTUH)	16400	12300	26200	19700	32800	24600
POWER CONNECTION	230v	208v	230v	208v	230v	208v
Min. Brch. Cir. Ampacity ②	27	23	42	36	52	45
Recmd-Max. Overload Protection (amps)	30	25	45	40	60	45
INDOOR COIL - Type	PLATE FIN		PLATE FIN		PLATE FIN	
Rows - F.P.I.	4 - 14		4 - 14		4 - 14	
Face Area (sq. ft.)	2.43		2.43		2.43	
Tube Size (in.)	3/8		3/8		3/8	
Refrigerant Control	TXV-NB		TXV-NB		TXV-NB	
Drain Connection Size (In.) ③	3/4 PVC SLIP		3/4 PVC SLIP		3/4 PVC SLIP	
DUCT CONNECTIONS	See Outline Drawing		See Outline Drawing		See Outline Drawing	
INDOOR FAN - Type	Centrifugal		Centrifugal		Centrifugal	
Diameter - Width (In.)	11 x 8		11 x 8		11 x 8	
No. Used	1		1		1	
Speeds (No.)	2		2		2	
CFM vs. in. w.g.	See Fan Performance Table		See Fan Performance Table		See Fan Performance Table	
Motor HP - RPM	1/3 - 1103		1/3 - 1103		1/3 - 1103	
F.L. Amps - L.R. Amps	1.4 / 3.3		1.4 / 3.3		1.4 / 3.3	
FILTER — Furnished?	Yes		Yes		Yes	
Type Recommended	Throwaway		Throwaway		Throwaway	
Hi Vel. (No.-Size-Thk.)	1 - 18 x 20 - 1 In.		1 - 18 x 20 - 1 In.		1 - 18 x 20 - 1 In.	
REFRIGERANT	R-22	R-410A	R-22	R-410A	R-22	R-410A
Ref. Line Connections	Brazed	Brazed	Brazed	Brazed	Brazed	Brazed
Line Size - Gas (in.)	3/4	5/8	3/4	5/8	3/4	5/8
Line Size - Liquid (in.)	5/16	3/8	5/16	3/8	5/16	3/8
DIMENSIONS (in.)	H X W X D		H X W X D		H X W X D	
Crated (H X W X D)	42-1/2 x 23 x 20-3/8		42-1/2 x 23 x 20-3/8		42-1/2 x 23 x 20-3/8	
Uncrated	See Outline Drawing		See Outline Drawing		See Outline Drawing	
WEIGHT (lbs.)	120 / 98		120 / 98		120 / 98	
Shipping - Net	120 / 98		120 / 98		120 / 98	

① These Air Handlers are A.R.I certified with various Split System Air conditioners and Heat Pumps (ARI STANDARD 210/240). Refer to the Split System Outdoor Unit Product Data Guides for performance data.

② Minimum Circuit Ampacity includes Blower Motor Amps

③ 3/4" Plastic Pipe (Ref.: ASTM 1785-76)



General Data

MODEL	2TFB3F30B1D05A 4TFB3F30A1D05A		2TFB3F30B1D08A 4TFB3F30A1D08A		2TFB3F30B1D10A 4TFB3F30A1D10A	
RATED VOLTS/PH/Hz.	208/230/1/60		208/230/1/60		208/230/1/60	
RATINGS ①	See O.D. Specifications		See O.D. Specifications		See O.D. Specifications	
HEATER CAPACITY (Volts)	240v	208v	240v	208v	240v	208v
HEATER CAPACITY (BTUH)	16400	12300	26200	19700	32800	24600
POWER CONNECTION	230v	208v	230v	208v	230v	208v
Min. Brch. Cir. Ampacity	27	24	42	36	52	45
Recmd-Max. Overload Protection (amps)	30	25	45	40	60	45
INDOOR COIL - Type	PLATE FIN		PLATE FIN		PLATE FIN	
Rows - F.P.I.	4 - 14		4 - 14		4 - 14	
Face Area (sq. ft.)	2.43		2.43		2.43	
Tube Size (in.)	3/8		3/8		3/8	
Refrigerant Control	TXV-NB		TXV-NB		TXV-NB	
Drain Connection Size (In.) ③	3/4 PVC SLIP		3/4 PVC SLIP		3/4 PVC SLIP	
DUCT CONNECTIONS	See Outline Drawing		See Outline Drawing		See Outline Drawing	
INDOOR FAN - Type	Centrifugal		Centrifugal		Centrifugal	
Diameter - Width (In.)	10 x 8		10 x 8		10 x 8	
No. Used	1		1		1	
Speeds (No.)	2		2		2	
CFM vs. in. w.g.	See Fan Performance Table		See Fan Performance Table		See Fan Performance Table	
Motor HP - RPM	1/3 - 1125		1/3 - 1125		1/3 - 1125	
F.L. Amps - L.R. Amps	1.5 / 4.1		1.5 / 4.1		1.5 / 4.1	
FILTER — Furnished?	Yes		Yes		Yes	
Type Recommended	Throwaway		Throwaway		Throwaway	
Hi Vel. (No.-Size-Thk.)	1 - 18 x 20 - 1 In.		1 - 18 x 20 - 1 In.		1 - 18 x 20 - 1 In.	
REFRIGERANT	R-22	R-410A	R-22	R-410A	R-22	R-410A
Ref. Line Connections	Brazed	Brazed	Brazed	Brazed	Brazed	Brazed
Line Size - Gas (in.)	3/4	3/4	3/4	3/4	3/4	3/4
Line Size - Liquid (in.)	5/16	3/8	5/16	3/8	5/16	3/8
DIMENSIONS (in.)	H X W X D		H X W X D		H X W X D	
Crated (H X W X D)	42-1/2 x 23 x 20-3/8		42-1/2 x 23 x 20-3/8		42-1/2 x 23 x 20-3/8	
Uncrated	See Outline Drawing		See Outline Drawing		See Outline Drawing	
WEIGHT (lbs.)	120 / 98		120 / 98		120 / 98	
Shipping - Net	120 / 98		120 / 98		120 / 98	

① These Air Handlers are A.R.I certified with various Split System Air conditioners and Heat Pumps (ARI STANDARD 210/240). Refer to the Split System Outdoor Unit Product Data Guides for performance data.

② Minimum Circuit Ampacity includes Blower Motor Amps

③ 3/4" Plastic Pipe (Ref.: ASTM 1785-76)



General Data

Product Specifications

MODEL	2TFB3F36B1D05A 4TFB3F36A1D05A		2TFB3F36B1D08A 4TFB3F36A1D08A		2TFB3F36B1D10A 4TFB3F36A1D10A	
RATED VOLTS/PH/HZ.	208/230/1/60		208/230/1/60		208/230/1/60	
RATINGS ①	See O.D. Specifications		See O.D. Specifications		See O.D. Specifications	
HEATER CAPACITY (Volts)	240v	208v	240v	208v	240v	208v
HEATER CAPACITY (BTUH)	16400	12300	26200	19700	32800	24600
POWER CONNECTION	230v	208v	230v	208v	230v	208v
Min. Brch. Cir. Ampacity ②	30	27	45	40	55	48
Recmd-Max. Overload Protection (amps)	30	30	45	40	60	50
INDOOR COIL - Type	PLATE FIN		PLATE FIN		PLATE FIN	
Rows - F.P.I.	4 - 14		4 - 14		4 - 14	
Face Area (sq. ft.)	2.43		2.43		2.43	
Tube Size (in.)	3/8		3/8		3/8	
Refrigerant Control	TXV-NB		TXV-NB		TXV-NB	
Drain Connection Size (In.) ③	3/4 PVC SLIP		3/4 PVC SLIP		3/4 PVC SLIP	
DUCT CONNECTIONS	See Outline Drawing		See Outline Drawing		See Outline Drawing	
INDOOR FAN - Type	Centrifugal		Centrifugal		Centrifugal	
Diameter - Width (In.)	11 x 8		11 x 8		11 x 8	
No. Used	1		1		1	
Speeds (No.)	2		2		2	
CFM vs. in. w.g.	See Fan Performance Table		See Fan Performance Table		See Fan Performance Table	
Motor HP - RPM	1/2 - 1050		1/2 - 1050		1/2 - 1050	
F.L. Amps - L.R. Amps	4.1		4.1		4.1	
FILTER — Furnished?	Yes		Yes		Yes	
Type Recommended	Throwaway		Throwaway		Throwaway	
Hi Vel. (No.-Size-Thk.)	1 - 18 x 20 - 1 In.		1 - 18 x 20 - 1 In.		1 - 18 x 20 - 1 In.	
REFRIGERANT	R-22	R-410A	R-22	R-410A	R-22	R-410A
Ref. Line Connections	Brazed	Brazed	Brazed	Brazed	Brazed	Brazed
Line Size - Gas (in.)	7/8	3/4	7/8	3/4	7/8	3/4
Line Size - Liquid (in.)	3/8	3/8	3/8	3/8	3/8	3/8
DIMENSIONS (in.)	H X W X D		H X W X D		H X W X D	
Crated (H X W X D)	42-1/2 x 23 x 20-3/8		42-1/2 x 23 x 20-3/8		42-1/2 x 23 x 20-3/8	
Uncrated	See Outline Drawing		See Outline Drawing		See Outline Drawing	
WEIGHT (lbs.)	115 / 93		115 / 93		115 / 93	
Shipping - Net						

① These Air Handlers are A.R.I certified with various Split System Air conditioners and Heat Pumps (ARI STANDARD 210/240). Refer to the Split System Outdoor Unit Product Data Guides for performance data.

② Minimum Circuit Ampacity includes Blower Motor Amps

③ 3/4" Plastic Pipe (Ref.: ASTM 1785-76)



General Data

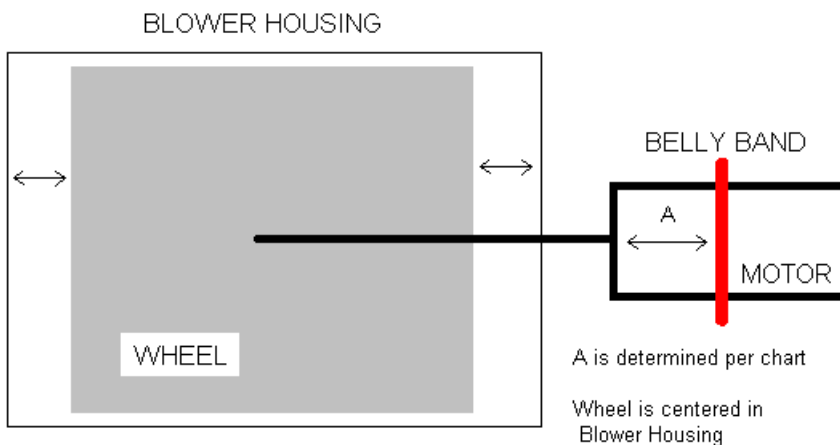
MODEL	2/4TFE3F25B1D05A		2/4TFE3F25B1D08A		2/4TFE3F25B1D10A	
RATED VOLTS/PH/Hz.	208/230/1/60		208/230/1/60		208/230/1/60	
RATINGS ①	See O.D. Specifications		See O.D. Specifications		See O.D. Specifications	
HEATER CAPACITY (Volts)	240v	208v	240v	208v	240v	208v
HEATER CAPACITY (BTUH)	16400	12300	26200	19700	32800	24600
POWER CONNECTION	230v	208v	230v	208v	230v	208v
Min. Brch. Cir. Ampacity ②	30	27	45	40	55	49
Recmd-Max. Overload Protection (amps)	30	30	45	40	60	50
INDOOR COIL - Type	PLATE FIN		PLATE FIN		PLATE FIN	
Rows - F.P.I.	4 - 14		4 - 14		4 - 14	
Face Area (sq. ft.)	2.43		2.43		2.43	
Tube Size (in.)	3/8		3/8		3/8	
Refrigerant Control	TXV-NB		TXV-NB		TXV-NB	
Drain Connection Size (In.) ③	3/4 PVC SLIP		3/4 PVC SLIP		3/4 PVC SLIP	
DUCT CONNECTIONS	See Outline Drawing		See Outline Drawing		See Outline Drawing	
INDOOR FAN - Type	Centrifugal		Centrifugal		Centrifugal	
Diameter - Width (in.)	10 x 8		10 x 8		10 x 8	
No. Used	1		1		1	
Speeds (No.)	Variable Speed		Variable Speed		Variable Speed	
CFM vs. in. w.g.	See Fan Performance Table		See Fan Performance Table		See Fan Performance Table	
Motor HP - RPM	1/2		1/2		1/2	
F.L. Amps - L.R. Amps	4.3		4.3		4.3	
FILTER — Furnished?	Yes		Yes		Yes	
Type Recommended	Throwaway		Throwaway		Throwaway	
Hi Vel. (No.-Size-Thk.)	1 - 18 x 20 - 1 In.		1 - 18 x 20 - 1 In.		1 - 18 x 20 - 1 In.	
REFRIGERANT	R-22	R-410A	R-22	R-410A	R-22	R-410A
Ref. Line Connections	Brazed	Brazed	Brazed	Brazed	Brazed	Brazed
Line Size - Gas (in.)	3/4	5/8	3/4	5/8	3/4	5/8
Line Size - Liquid (in.)	5/16	1/4	5/16	1/4	5/16	1/4
DIMENSIONS (in.)	H X W X D		H X W X D		H X W X D	
Crated (H X W X D)	42-1/2 x 23 x 20-3/8		42-1/2 x 23 x 20-3/8		42-1/2 x 23 x 20-3/8	
Uncrated	See Outline Drawing		See Outline Drawing		See Outline Drawing	
WEIGHT (lbs.)	120 / 98		120 / 98		120 / 98	
Shipping - Net	120 / 98		120 / 98		120 / 98	

① These Air Handlers are A.R.I certified with various Split System Air conditioners and Heat Pumps (ARI STANDARD 210/240). Refer to the Split System Outdoor Unit Product Data Guides for performance data.

② Minimum Circuit Ampacity includes Blower Motor Amps

③ 3/4" Plastic Pipe (Ref.: ASTM 1785-76)

DISTANCE FROM BELLY BAND TO SHAFT FACE OF MOTOR FOR MINIMUM VIBRATION



MODEL	"A" INCHES
2TFB3F18B1 4TFB3F18A1	1-7/8
2TFB3F24B1 4TFB3F24A1	1-7/8
2TFB3F30B1 4TFB3F30A1	1-7/8
2TFB3F36B1 4TFB3F36A1	1-1/8
2TFE3F25B1 4TFE3F25B1	2-1/8
FOR FACTORY OEM MOTORS	

Performance Data

Airflow Performance 2TFB3F10B1D 4TFB3F18A1D				
EXTERNAL STATIC PRESSURE (In. wq.)	AIRFLOW (CFM)			
	230 VOLTS		208 VOLTS	
	HI	LO	HI	LO
0	927	732	847	656
0.1	807	605	804	620
0.2	840	634	758	584
0.3	784	574	706	535
0.4	719	502	645	482
0.5	644	418	573	368
0.6	555	325	489	261
0.7	452	227	394	158
0.8	331	132	267	82
0.9	-	-	-	-
NOTES:	With wet coil, filter, & 0 or 10 kW electric heater			

Airflow Performance 2TFB3F24B1D 4TFB3F24A1D				
EXTERNAL STATIC PRESSURE (In. wq.)	AIRFLOW (CFM)			
	230 VOLTS		208 VOLTS	
	HI	LO	HI	LO
0	1172	950	1144	867
0.1	1123	900	1080	819
0.2	1074	851	1035	769
0.3	1017	798	976	717
0.4	949	738	912	659
0.5	870	670	843	595
0.6	784	593	768	522
0.7	701	509	687	440
0.8	633	421	602	346
0.9	588	331	514	240
NOTES:	With wet coil, filter, & 6 or 10 kW electric heater			

Airflow Performance 2TFB3F30B1D 4TFB3F30A1D				
EXTERNAL STATIC PRESSURE (In. wq.)	AIRFLOW (CFM)			
	230 VOLTS		208 VOLTS	
	HI	LO	HI	LO
0	1126	1074	1093	1021
0.1	1073	1024	1042	977
0.2	1021	975	982	930
0.3	963	920	938	876
0.4	896	856	872	814
0.5	817	780	795	743
0.6	729	693	707	662
0.7	635	599	614	574
0.8	543	505	523	479
0.9	462	419	445	383
NOTES:	With wet coil, filter, & 0 or 10 kW electric heater			

Airflow Performance 2TFB3F36B1D 4TFB3F36A1D				
EXTERNAL STATIC PRESSURE (In. wq.)	AIRFLOW (CFM)			
	230 VOLTS		208 VOLTS	
	HI	LO	HI	LO
0	1240	1150	1210	1131
0.1	1199	1117	1167	1082
0.2	1152	1080	1121	1042
0.3	1101	1041	1071	1004
0.4	1045	1000	1017	963
0.5	985	954	958	914
0.6	921	901	893	859
0.7	851	837	820	797
0.8	771	758	736	733
0.9	680	658	640	672
NOTES:	With wet coil, filter, & 8 or 10 kW electric heater			



Performance Data

Airflow Performance												
4TFE3F25B1D: with Wet coil, 8 or 10 kW Electric Heater, Filter												
Outdoor Unit Size	Speed Settings	Airflow Settings	Dip Switch Settings				Airflow Power	External Static Pressure (in.w.g.)				
			Switch 1	Switch 2	Switch 3	Switch 4		0.1	0.3	0.5	0.7	0.9
1.5 tons	Low	350 CFM/ton	ON	ON	OFF	ON	CFM	501	467	437	421	365
			Watts	64	91	121	156	179				
	Normal	400 CFM/ton	ON	ON	OFF	OFF	CFM	555	533	522	515	461
			Watts	76	109	146	187	211				
	High	450 CFM/ton	ON	ON	ON	OFF	CFM	612	620	610	579	567
			Watts	90	137	180	213	254				
2 tons	Low	350 CFM/ton	OFF	ON	OFF	ON	CFM	638	648	635	602	610
			Watts	97	147	190	222	275				
	Normal	400 CFM/ton	OFF	ON	OFF	OFF	CFM	747	738	734	730	719
			Watts	136	181	233	286	331				
	High	450 CFM/ton	OFF	ON	ON	OFF	CFM	859	851	841	836	789
			Watts	190	237	288	346	383				
2.5 tons	Low	350 CFM/ton	ON	OFF	OFF	ON	CFM	816	815	809	798	818
			Watts	168	217	270	326	387				
	Normal	400 CFM/ton	ON	OFF	OFF	OFF	CFM	978	979	966	930	832
			Watts	250	307	360	399	401				
	High	450 CFM/ton	ON	OFF	ON	OFF	CFM	1110	1092	1075	1014	789
			Watts	343	391	444	465	353				
3 tons	Low	350 CFM/ton	OFF	OFF	OFF	ON	CFM	1029	1022	1011	964	793
			Watts	284	338	394	426	359				
	Normal **	400 CFM/ton	OFF	OFF	OFF	OFF	CFM	1176	1175	1129	1036	958
			Watts	394	460	490	480	478				
	High	450 CFM/ton	OFF	OFF	ON	OFF	CFM	1338	1274	1189	1096	981
			Watts	569	574	561	547	504				
NOTES:	1) ** Factory Setting 2) At continuous fan setting: Airflow values are approximately 50% of listed values.											

4TFE3F25B1D Airflow Performance with Auxiliary Heat			
Airflow Settings	Dip Switch Settings		Nominal Airflow
	Switch 7	Switch 8	
Low	ON	ON	600
Med-Lo	OFF	ON	800
Med-Hi **	ON	OFF	1000
High	OFF	OFF	1200

Performance Data

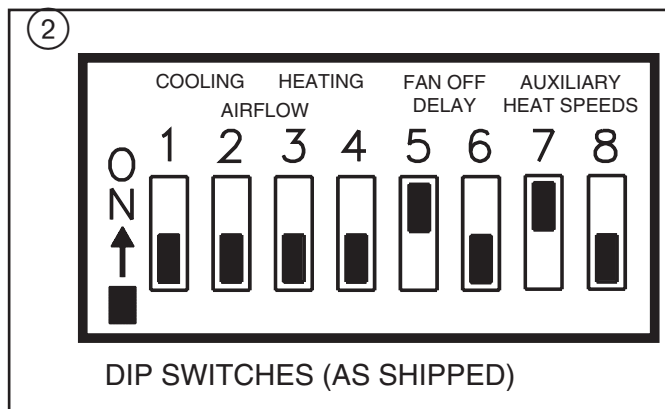
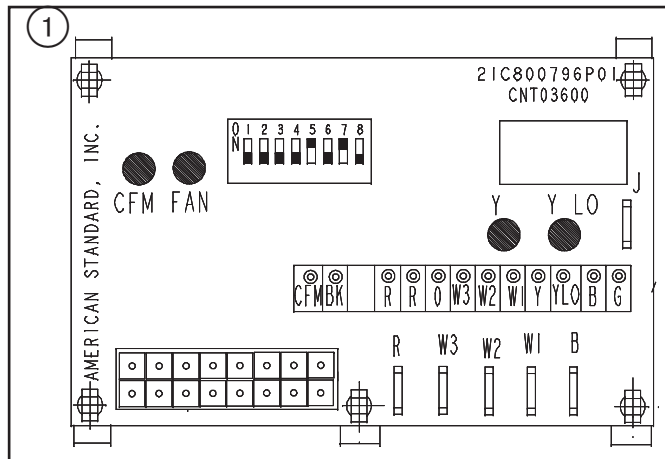
VARIABLE SPEED BLOWER SETUP FOR 2/4TFE3F25 MODEL ONLY

AIRFLOW ADJUSTMENT

If the airflow needs to be increased or decreased, see the Airflow Label on the air handler or the Blower Performance Table in the Service Facts. Information on changing the speed of the blower motor for your specific outdoor model size is in the Blower Performance Table.

Blower speed changes are made on the ECM Fan Control. The ECM Fan control controls the variable speed motor.

There is a bank of 8 dip switches (see Figure 1), located at the upper part of the board. The dip switches work in pairs to match the airflow for the outdoor unit size (tons), cooling airflow adjustment, cooling off delay options, and heating airflow adjustment. The switches appear as shown in Figure 2.



INDOOR BLOWER TIMING

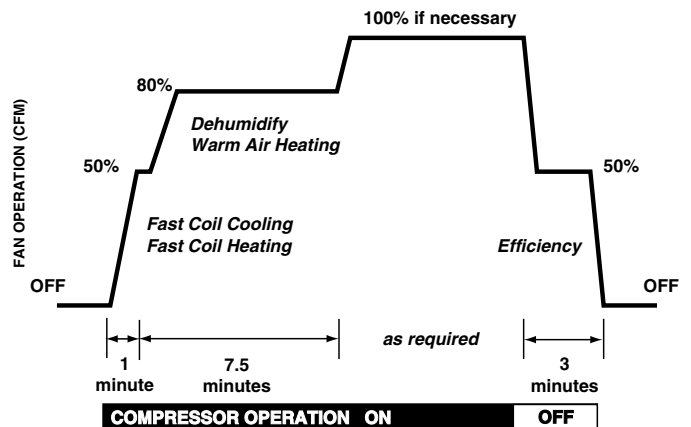
The ECM Fan Control controls the variable speed indoor blower. The FAN-OFF period is set on the ECM Fan Control board by dip switches #5 and #6. The blower off-delay settings are as follows:

COOLING OFF - DELAY OPTIONS

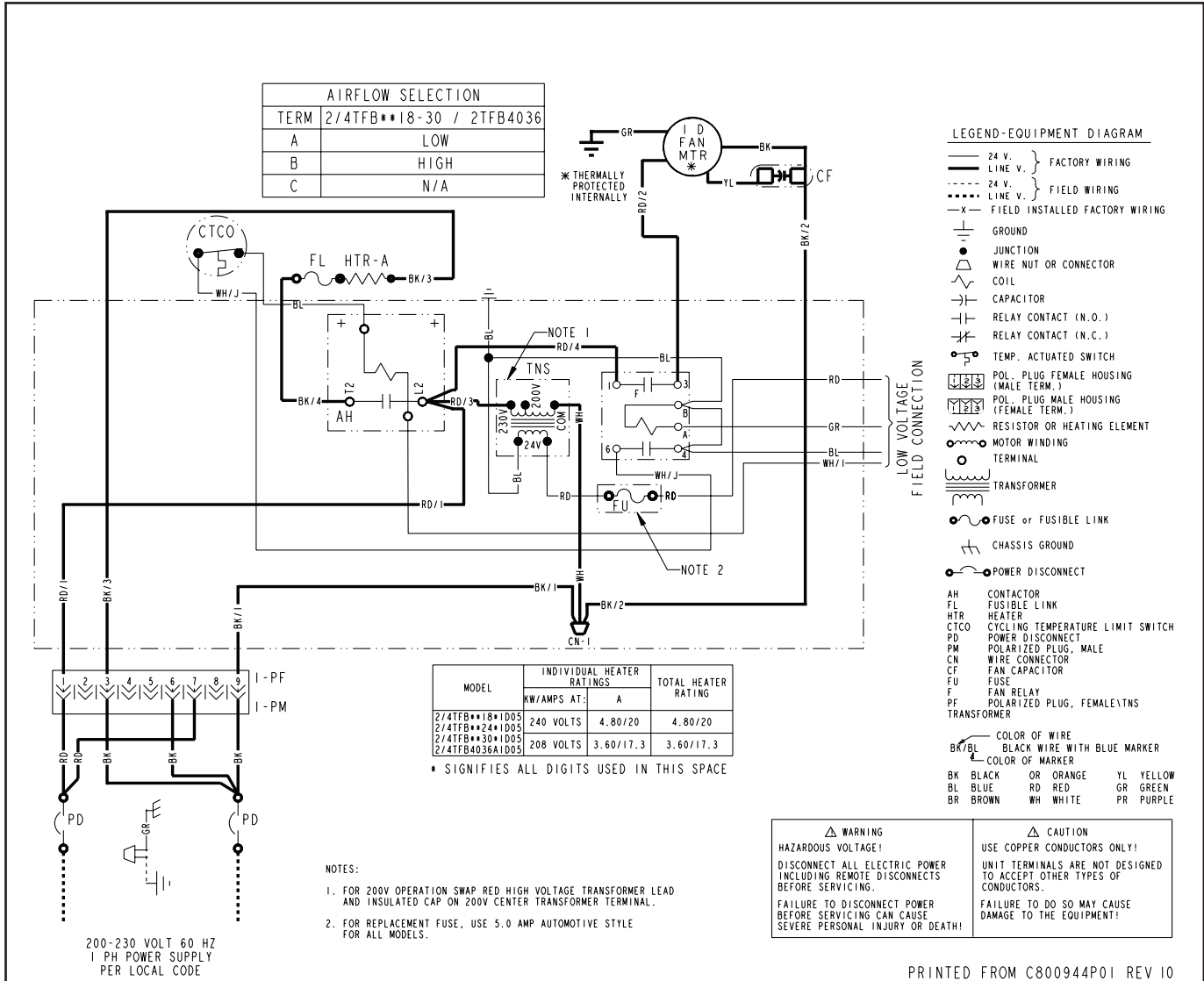
SWITCH SETTINGS		SELECTION	NOMINAL AIRFLOW
5 - OFF	6 - OFF	NONE	SAME
5 - ON	6 - OFF	1.5 MINUTES	100% *
5 - OFF	6 - ON	3 MINUTES	50%
5 - ON	6 - ON	ENHANCED**	50 - 100%

* - This setting is equivalent to the BAY24X045 relay benefit

** - This ENHANCED MODE selection provides a ramping up and ramping down of the blower speed to provide improved comfort, quietness, and potential energy savings. The graph shows the ramping process.

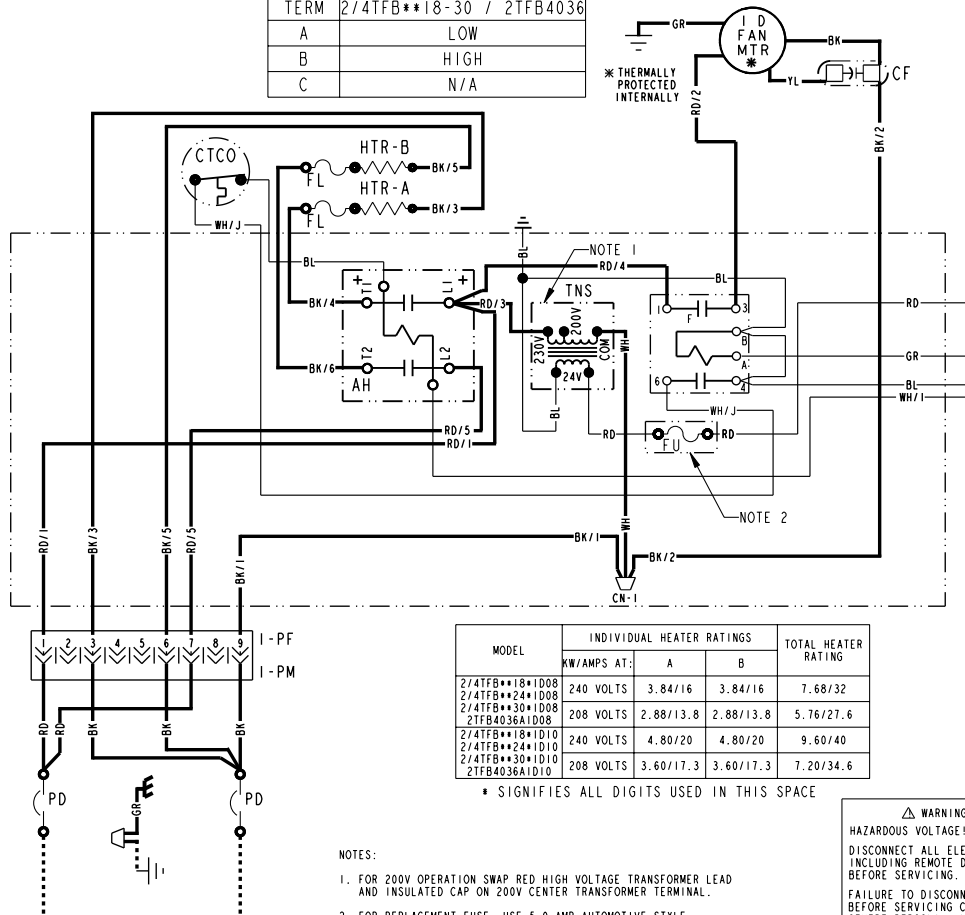


Electrical Data



Electrical Data

AIRFLOW SELECTION	
TERM	2/4TFB**18-30 / 2TFB4036
A	LOW
B	HIGH
C	N/A



LEGEND-EQUIPMENT DIAGRAM

- 24 V. LINE V. } FACTORY WIRING
- - - 24 V. LINE V. } FIELD WIRING
- x - FIELD INSTALLED FACTORY WIRING
- ⊥ GROUND
- WIRE NUT OR CONNECTOR
- ⊕ COIL
- ⊖ CAPACITOR
- ⊕ RELAY CONTACT (N.O.)
- ⊖ RELAY CONTACT (N.C.)
- ⊕ TEMP. ACTUATED SWITCH
- ⊖ POL. PLUG FEMALE HOUSING (MALE TERM.)
- ⊕ POL. PLUG MALE HOUSING (FEMALE TERM.)
- ⊖ RESISTOR OR HEATING ELEMENT
- ⊕ MOTOR WINDING
- TERMINAL
- ⊕ TRANSFORMER
- FUSE or FUSIBLE LINK
- ⊕ CHASSIS GROUND
- POWER DISCONNECT
- AH CONTACTOR
- FL FUSIBLE LINK
- HTR HEATER
- CTCO CYCLING TEMPERATURE LIMIT SWITCH
- PD POWER DISCONNECT
- PM POLARIZED PLUG, MALE
- CN WIRE CONNECTOR
- CF FAN CAPACITOR
- FU FUSE
- PF FAN RELAY
- PF POLARIZED PLUG, FEMALE/TNS TRANSFORMER
- BK/BL COLOR OF WIRE
BLACK WIRE WITH BLUE MARKER
- BL BLACK OR ORANGE
- BR BROWN RD RED GR GREEN
- YL YELLOW PR PURPLE

MODEL	INDIVIDUAL HEATER RATINGS			TOTAL HEATER RATING
	KW/AMPS AT:	A	B	
2/4TFB**18*1D08	240 VOLTS	3.84/16	3.84/16	7.68/32
2/4TFB**24*1D08	240 VOLTS	2.88/13.8	2.88/13.8	5.76/27.6
2/4TFB**30*1D08	240 VOLTS	4.80/20	4.80/20	9.60/40
2TFB4036A1D08	208 VOLTS	2.88/13.8	2.88/13.8	5.76/27.6
2/4TFB**18*1D10	240 VOLTS	4.80/20	4.80/20	9.60/40
2/4TFB**24*1D10	240 VOLTS	3.60/17.3	3.60/17.3	7.20/34.6
2/4TFB**30*1D10	240 VOLTS	3.60/17.3	3.60/17.3	7.20/34.6
2TFB4036A1D10	208 VOLTS	3.60/17.3	3.60/17.3	7.20/34.6

* SIGNIFIES ALL DIGITS USED IN THIS SPACE

NOTES:

- FOR 200V OPERATION SWAP RED HIGH VOLTAGE TRANSFORMER LEAD AND INSULATED CAP ON 200V CENTER TRANSFORMER TERMINAL.
- FOR REPLACEMENT FUSE, USE 5.0 AMP AUTOMOTIVE STYLE FOR ALL MODELS.

200-230 VOLT 60 HZ
1 PH POWER SUPPLY
PER LOCAL CODE

<p>⚠ WARNING HAZARDOUS VOLTAGE! DISCONNECT ALL ELECTRIC POWER INCLUDING REMOTE DISCONNECTS BEFORE SERVICING. FAILURE TO DISCONNECT POWER BEFORE SERVICING CAN CAUSE SEVERE PERSONAL INJURY OR DEATH!</p>	<p>⚠ CAUTION USE COPPER CONDUCTORS ONLY! UNIT TERMINALS ARE NOT DESIGNED TO ACCEPT OTHER TYPES OF CONDUCTORS. FAILURE TO DO SO MAY CAUSE DAMAGE TO THE EQUIPMENT!</p>
---	--

PRINTED FROM C800945P01 REV 8

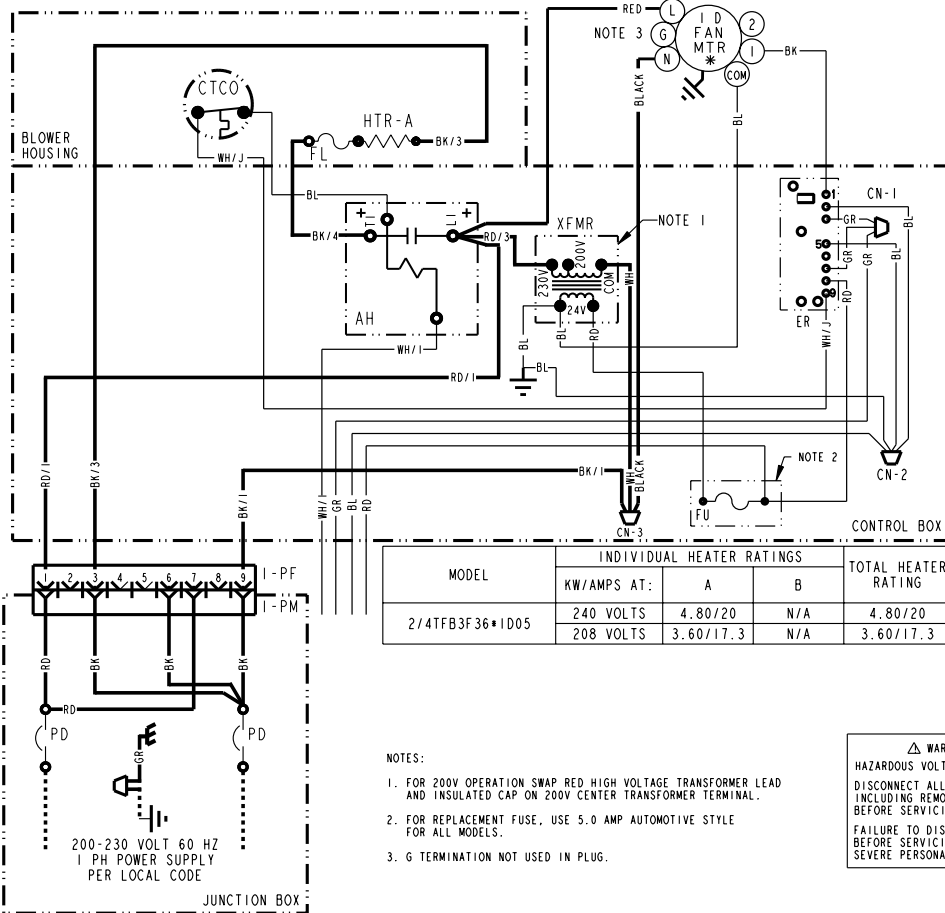
Electrical Data

AIRFLOW SELECTION	
TERM	2/4TFB3F36
1	LOW
2	HIGH

* THERMALLY PROTECTED INTERNALLY

LEGEND-EQUIPMENT DIAGRAM

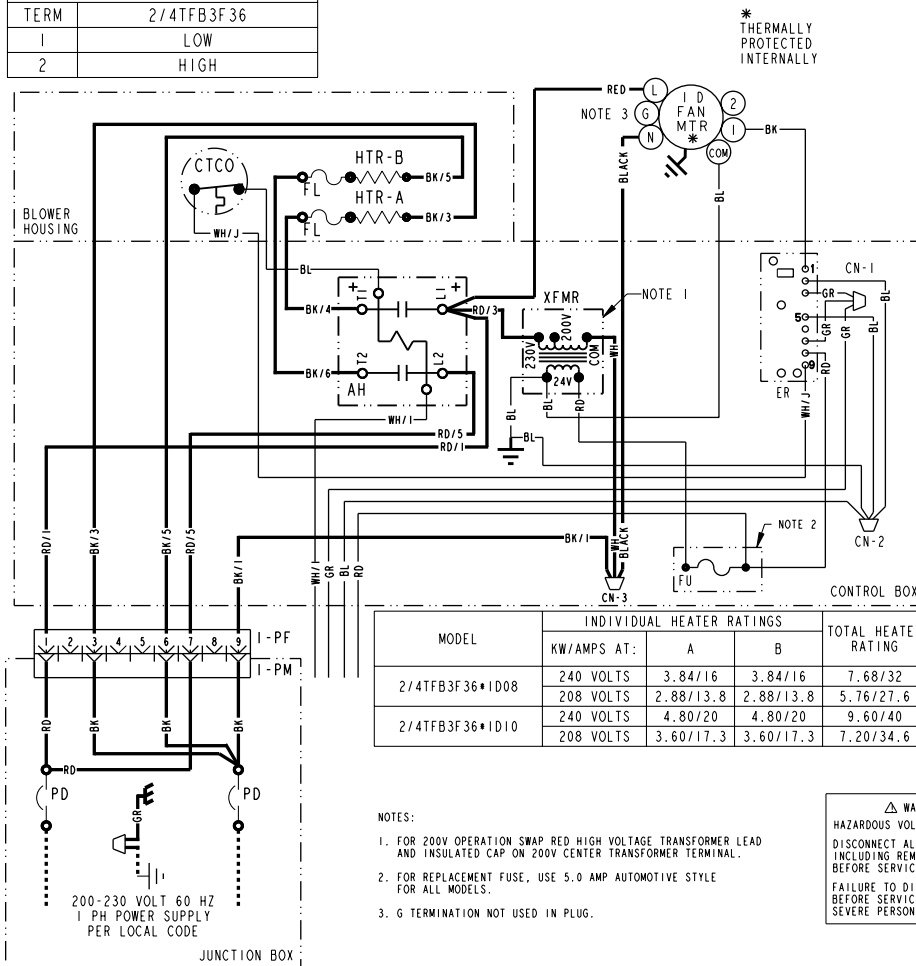
- 24 V. LINE V. } FACTORY WIRING
- - - 24 V. LINE V. } FIELD WIRING
- x - FIELD INSTALLED FACTORY WIRING
- ⊥ GROUND
- JUNCTION
- ⊕ WIRE NUT OR CONNECTOR
- ⊖ COIL
- ⊕ CAPACITOR
- ⊖ RELAY CONTACT (N.O.)
- ⊕ RELAY CONTACT (N.C.)
- ⊖ TEMP. ACTUATED SWITCH
- ⊕ POL. PLUG FEMALE HOUSING (MALE TERM.)
- ⊖ POL. PLUG MALE HOUSING (FEMALE TERM.)
- ⊕ RESISTOR OR HEATING ELEMENT
- ⊖ MOTOR WINDING
- TERMINAL
- ⊕ TRANSFORMER
- ⊖ FUSE OR FUSIBLE LINK
- ⊕ CHASSIS GROUND
- ⊖ POWER DISCONNECT
- AH CONTACTOR
- FL FUSIBLE LINK
- HTR HEATER
- CTCO CYCLING TEMPERATURE LIMIT SWITCH
- PD POWER DISCONNECT
- PM POLARIZED PLUG, MALE
- CN WIRE CONNECTOR
- CF FAN CAPACITOR
- FU FUSE
- F FAN RELAY
- PF POLARIZED PLUG, FEMALE
- XFMR TRANSFORMER
- ER ELECTRONIC RELAY
- BK/BL COLOR OF WIRE
- BL/BL BLACK WIRE WITH BLUE MARKER
- COLOR OF MARKER
- BK BLACK OR ORANGE YL YELLOW
- BL BLUE RD RED GR GREEN
- BR BROWN WH WHITE PR PURPLE



PRINTED FROM D802225P01 REV 2

Electrical Data

AIRFLOW SELECTION	
TERM	2/4TFB3F36
1	LOW
2	HIGH



* THERMALLY PROTECTED INTERNALLY

LEGEND-EQUIPMENT DIAGRAM

- 24 V. LINE V. } FACTORY WIRING
- - - 24 V. LINE V. } FIELD WIRING
- · · · · FIELD INSTALLED FACTORY WIRING
- ⊥ GROUND
- JUNCTION
- ⊕ WIRE NUT OR CONNECTOR
- ⊞ COIL
- ⊞ CAPACITOR
- ⊞ RELAY CONTACT (N.O.)
- ⊞ RELAY CONTACT (N.C.)
- ⊞ TEMP. ACTUATED SWITCH
- ⊞ POL. PLUG FEMALE HOUSING (MALE TERM.)
- ⊞ POL. PLUG MALE HOUSING (FEMALE TERM.)
- ⊞ RESISTOR OR HEATING ELEMENT
- ⊞ MOTOR WINDING
- ⊞ TERMINAL
- ⊞ TRANSFORMER
- ⊞ FUSE or FUSIBLE LINK
- ⊞ CHASSIS GROUND
- ⊞ POWER DISCONNECT
- AH CONTACTOR
- FL FUSIBLE LINK
- HTR HEATER
- CTCO CYCLING TEMPERATURE LIMIT SWITCH
- PD POWER DISCONNECT
- PM POLARIZED PLUG, MALE
- CN WIRE CONNECTOR
- CF FAN CAPACITOR
- FU FUSE
- F FAN RELAY
- PF POLARIZED PLUG, FEMALE
- XFMR TRANSFORMER
- ER ELECTRONIC RELAY
- BR/BK COLOR OF WIRE
- BL/BK BLACK WIRE WITH BLUE MARKER
- BR/BK COLOR OF MARKER
- BK BLACK OR ORANGE YL YELLOW
- BL BLUE RD RED GR GREEN
- BR BROWN WH WHITE PR PURPLE

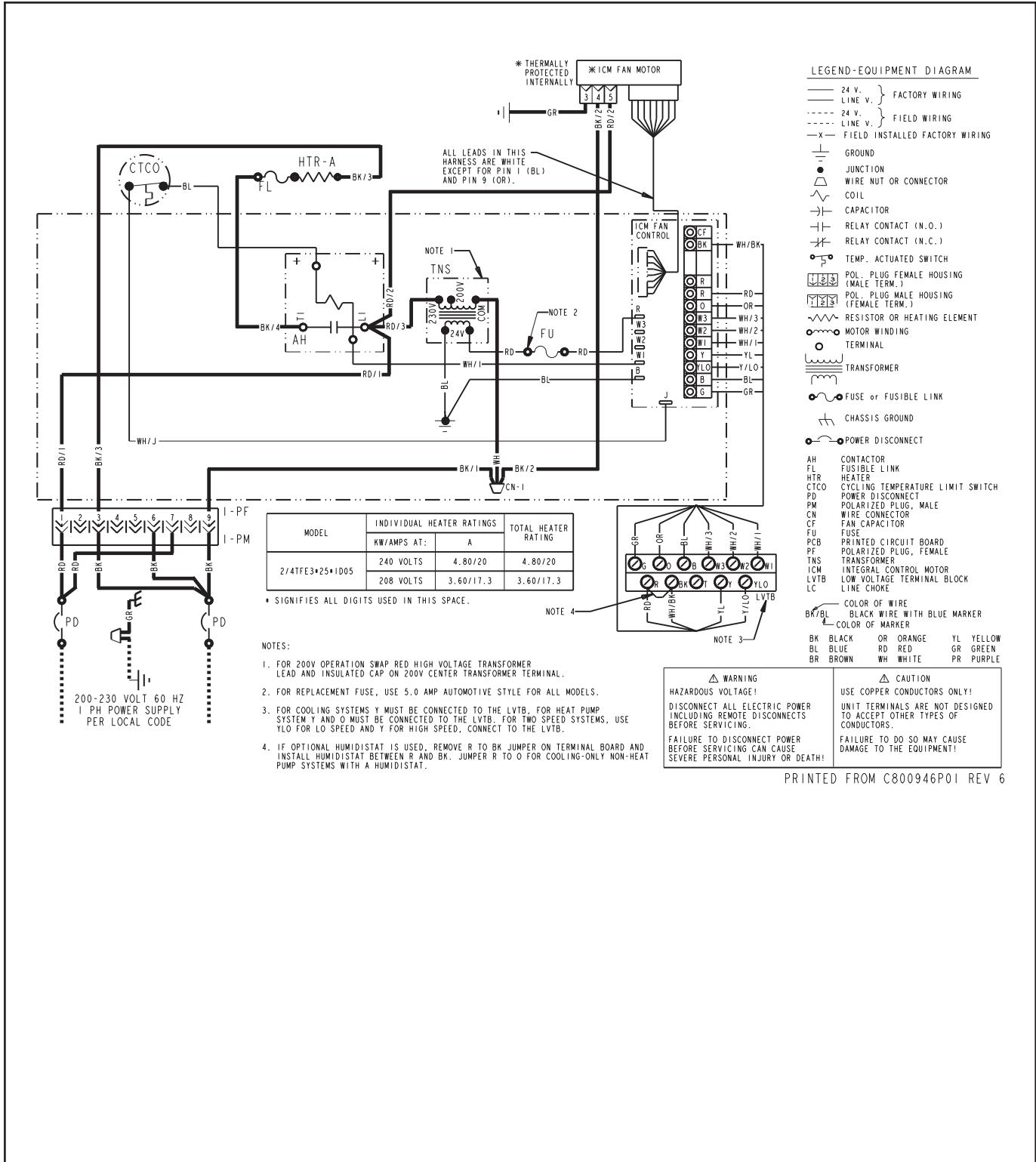
MODEL	INDIVIDUAL HEATER RATINGS			TOTAL HEATER RATING
	KW/AMPS AT:	A	B	
2/4TFB3F36*1D08	240 VOLTS	3.84/16	3.84/16	7.68/32
	208 VOLTS	2.88/13.8	2.88/13.8	5.76/27.6
2/4TFB3F36*1D10	240 VOLTS	4.80/20	4.80/20	9.60/40
	208 VOLTS	3.60/17.3	3.60/17.3	7.20/34.6

- NOTES:
- FOR 200V OPERATION SWAP RED HIGH VOLTAGE TRANSFORMER LEAD AND INSULATED CAP ON 200V CENTER TRANSFORMER TERMINAL.
 - FOR REPLACEMENT FUSE, USE 5.0 AMP AUTOMOTIVE STYLE FOR ALL MODELS.
 - G TERMINATION NOT USED IN PLUG.

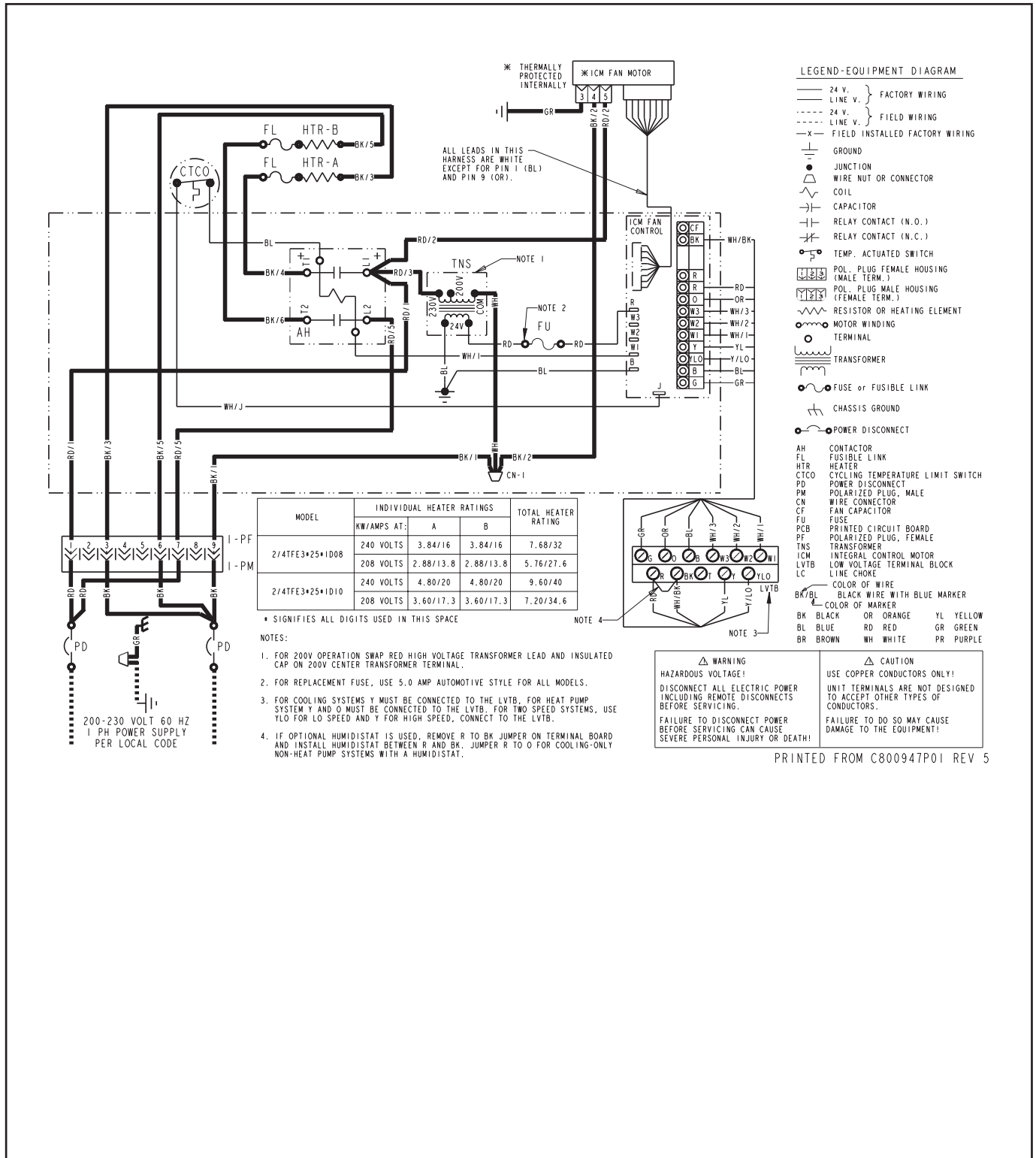
<p>⚠ WARNING HAZARDOUS VOLTAGE! DISCONNECT ALL ELECTRIC POWER INCLUDING REMOTE DISCONNECTS BEFORE SERVICING. FAILURE TO DISCONNECT POWER BEFORE SERVICING CAN CAUSE SEVERE PERSONAL INJURY OR DEATH!</p>	<p>⚠ CAUTION USE COPPER CONDUCTORS ONLY! UNIT TERMINALS ARE NOT DESIGNED TO ACCEPT OTHER TYPES OF CONDUCTORS. FAILURE TO DO SO MAY CAUSE DAMAGE TO THE EQUIPMENT!</p>
---	--

PRINTED FROM D802160P01 REV 3

Electrical Data



Electrical Data



LEGEND-EQUIPMENT DIAGRAM

- 24 V. } FACTORY WIRING
- 24 V. } FIELD WIRING
- x- FIELD INSTALLED FACTORY WIRING
- ⊥ GROUND
- JUNCTION
- ⊕ WIRE NUT OR CONNECTOR
- ⊖ COIL
- ⊖ CAPACITOR
- ⊖ RELAY CONTACT (N.O.)
- ⊖ RELAY CONTACT (N.C.)
- ⊖ TEMP. ACTUATED SWITCH
- ⊖ POL. PLUG FEMALE HOUSING (MALE TERM.)
- ⊖ POL. PLUG MALE HOUSING (FEMALE TERM.)
- ⊖ RESISTOR OR HEATING ELEMENT
- ⊖ MOTOR WINDING
- ⊖ TERMINAL
- ⊖ TRANSFORMER
- ⊖ FUSE or FUSIBLE LINK
- ⊖ CHASSIS GROUND
- ⊖ POWER DISCONNECT
- AH CONTACTOR
- FL FUSIBLE LINK
- HTR HEATER
- CTCO CYCLING TEMPERATURE LIMIT SWITCH
- PD POWER DISCONNECT
- PM POLARIZED PLUG, MALE
- CN WIRE CONNECTOR
- CF FAN CAPACITOR
- FU FUSE
- PCB PRINTED CIRCUIT BOARD
- PF POLARIZED PLUG, FEMALE
- TNS TRANSFORMER
- ICM INTEGRAL CONTROL MOTOR
- LVTB LOW VOLTAGE TERMINAL BLOCK
- LC LINE CHOKE
- COLOR OF WIRE
- BK/BL BLACK WIRE WITH BLUE MARKER
- COLOR OF MARKER
- BK BLACK OR ORANGE YL YELLOW
- BL BLUE RD RED GR GREEN
- BR BROWN WH WHITE PR PURPLE

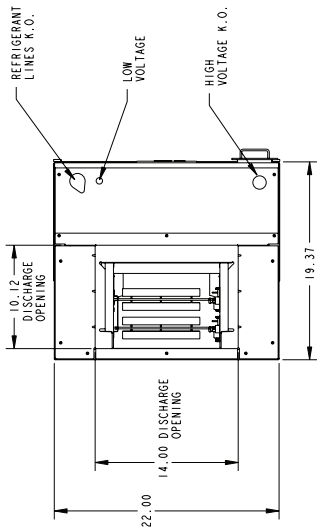
MODEL	INDIVIDUAL HEATER RATINGS			TOTAL HEATER RATING
	KW/AMPS AT:	A	B	
2/4TFE3*25*1D08	240 VOLTS	3.84/16	3.84/16	7.68/32
	208 VOLTS	2.88/13.8	2.88/13.8	5.76/27.6
2/4TFE3*25*1D10	240 VOLTS	4.80/20	4.80/20	9.60/40
	208 VOLTS	3.60/17.3	3.60/17.3	7.20/34.6

- * SIGNIFIES ALL DIGITS USED IN THIS SPACE
- NOTES:
- FOR 200V OPERATION SWAP RED HIGH VOLTAGE TRANSFORMER LEAD AND INSULATED CAP ON 200V CENTER TRANSFORMER TERMINAL.
 - FOR REPLACEMENT FUSE, USE 5.0 AMP AUTOMOTIVE STYLE FOR ALL MODELS.
 - FOR COOLING SYSTEMS Y MUST BE CONNECTED TO THE LVTB; FOR HEAT PUMP SYSTEM Y AND O MUST BE CONNECTED TO THE LVTB. FOR TWO SPEED SYSTEMS, USE YLO FOR LO SPEED AND Y FOR HIGH SPEED, CONNECT TO THE LVTB.
 - IF OPTIONAL HUMIDISTAT IS USED, REMOVE R TO BK JUMPER ON TERMINAL BOARD AND INSTALL HUMIDISTAT BETWEEN R AND BK. JUMPER R TO O FOR COOLING-ONLY NON-HEAT PUMP SYSTEMS WITH A HUMIDISTAT.

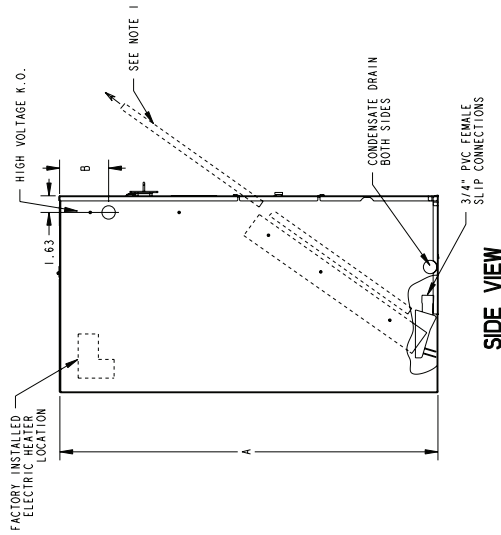
⚠ WARNING
HAZARDOUS VOLTAGE!
DISCONNECT ALL ELECTRIC POWER INCLUDING REMOTE DISCONNECTS BEFORE SERVICING.
FAILURE TO DISCONNECT POWER BEFORE SERVICING CAN CAUSE SEVERE PERSONAL INJURY OR DEATH!

⚠ CAUTION
USE COPPER CONDUCTORS ONLY!
UNIT TERMINALS ARE NOT DESIGNED TO ACCEPT OTHER TYPES OF CONDUCTORS.
FAILURE TO DO SO MAY CAUSE DAMAGE TO THE EQUIPMENT!

OUTLINE DRAWING FOR 2TFB3F18,24,30,36B1D05, 08, 10; 4TFB3F18,24,30,36A1D05, 08, 10; 4TFE3F25B1D05, 08, 10



TOP VIEW



SIDE VIEW

MINIMUM UNIT CLEARANCE TABLE	
TO COMBUSTIBLE MATERIAL (REQUIRED SERVICE CLEARANCE (RECOMMENDED))	
SIDES FRONT	0"
BACK	2"
INLET DUCT	0"
OUTLET DUCT	1"

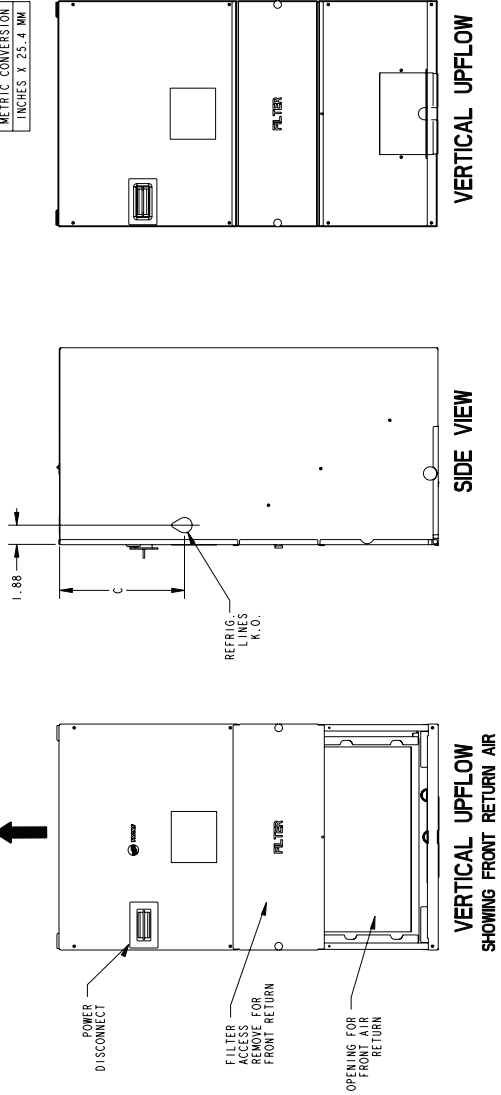
* 1" FOR THE FIRST 3 FT. OF PLENUM AND OUTLET DUCT FOR MODELS WITH 8KW OR 10KW ELECTRIC HEAT. MODELS WITH 5KW ELECTRIC HEAT ARE APPROVED FOR 0" PLENUM AND DUCT CLEARANCE

NOTES:
1. TUBING MUST BE ROUTED TO ALLOW FOR FILTER REMOVAL AND COMPONENT SERVICE

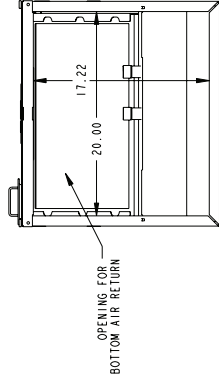
MODEL NO.	FLOW CONTROL	GAS LINE SIZE	LIQUID LINE SIZE	A	B	C
2TFB4018A	FCCV	5/8 BRAZE	1/4 BRAZE			
2TFB4024A	FCCV	3/4 BRAZE	5/16 BRAZE	37.00	4.80	12.23
2TFB4030A	FCCV	3/4 BRAZE	5/16 BRAZE			
2TFE3025A	TXV	3/4 BRAZE	5/16 BRAZE			
2TFB4036A	FCCV	7/8 BRAZE	3/8 BRAZE	39.00	6.80	14.23
2TFB3F18B	TXV	5/8 BRAZE	1/4 BRAZE	37.00	4.80	12.23
2TFE3F25B	TXV	3/4 BRAZE	5/16 BRAZE			
4TFB3F24B	TXV	5/8 BRAZE	1/4 BRAZE			
2TFB3F24B	TXV	3/4 BRAZE	5/16 BRAZE			
2TFB3F30B	TXV	3/4 BRAZE	5/16 BRAZE			
2TFB3F36B	TXV	7/8 BRAZE	3/8 BRAZE	39.00	6.80	14.23
4TFB3F18	TXV	1/2 BRAZE	3/8 BRAZE			
4TFB3F24	TXV	5/8 BRAZE	3/8 BRAZE			
4TFB3F30/4TFB3F36	TXV	3/4 BRAZE	3/8 BRAZE			

METRIC CONVERSION
INCHES X 25.4 MM

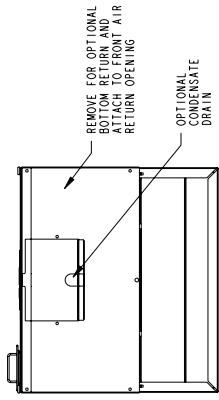
AIRFLOW



VERTICAL UPFLOW SHOWING FRONT RETURN AIR



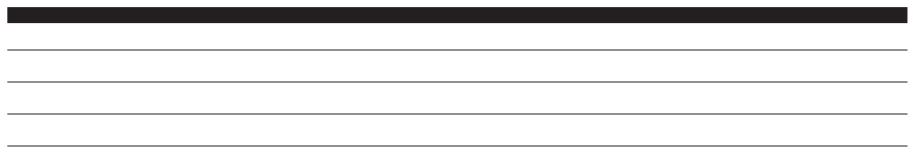
BOTTOM VIEW SHOWING BOTTOM RETURN AIR



BOTTOM VIEW



Trane
6200 Troup Highway
Tyler, TX 75707
www.trane.com



Trane has a policy of continuous product and product data improvement and it reserves the right to change design and specifications without notice.