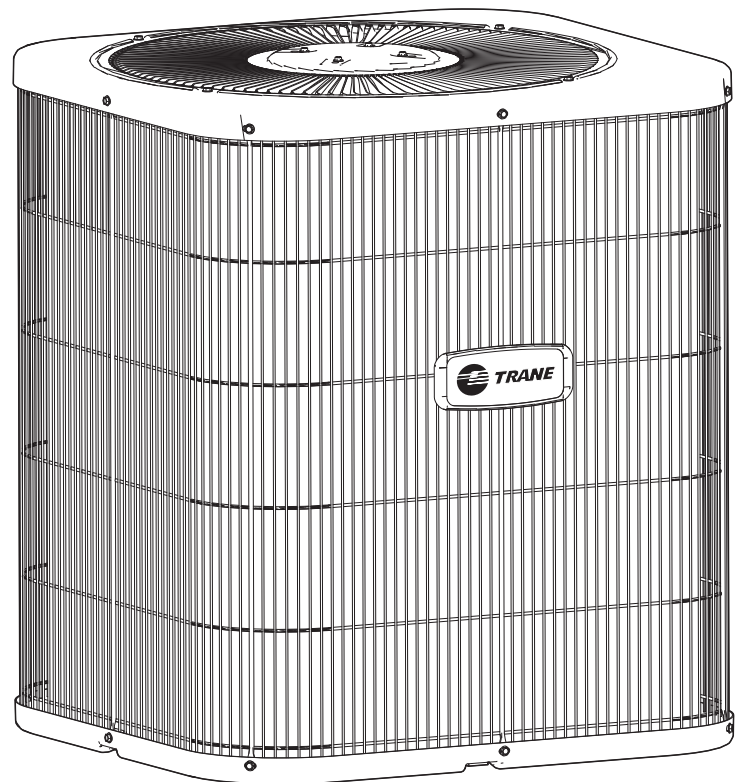




Replacement Condensing Unit Product & Performance Data

XB 300
2TTM3018-060

1½ – 5 Tons



PUB. NO. 22-1861-01



Features and Benefits

- **Climatuff**® compressor
- All aluminum **Climatuff**® coil
- **WeatherGuard**™ fasteners
- **Comfort"R"**™ mode approved
- Glossy corrosion resistant finish
- Internal compressor high/low pressure and temperature protection
- Liquid line filter-drier supplied for field installation
- Anthracite gray cabinet
- R-22 refrigerant
- S.E.E.T. design testing
- 100% line run test
- Low ambient cooling to 60°F as shipped
- Low ambient cooling to 30°F with AY28X079
- Low ambient cooling to 0°F with BAYLOAM103
- **Extended warranties available**

Contents

Features and Benefits	2
General Data	4
Product Specifications	4
Accessory Description and Usage	5
AHRI Standard Capacity Rating Conditions	5
Model Nomenclature	6
Dimensions	7
Electrical Data	9
Mechanical Specification Options	11



General Data

Product Specifications

Model No. ①	2TTM3018A1	2TTM3024A1	2TTM3030A1	2TTM3036A1
Electrical Data V/Ph/Hz ②	208/230/1/60	208/230/1/60	208/230/1/60	208/230/1/60
Min Cir Ampacity	11.5	11.5	13.9	20.6
Max Fuse Size (Amps)	20	20	20	35
Compressor	CLIMATUFF®	CLIMATUFF®	CLIMATUFF®	CLIMATUFF® - SCROLL
RL Amps - LR Amps	8.5 - 48.5	8.5 - 48.5	10.1 - 63.5	15.4 - 87.0
Outdoor Fan FL Amps	0.9	0.9	1.3	1.3
Fan HP	1/8	1/8	1/4	1/4
Fan Dia (inches)	19.12	19.12	19.12	19.12
Coil	CLIMATUFF®	CLIMATUFF®	CLIMATUFF®	CLIMATUFF®
Refrigerant R-22 ⑦	5/01-LB/OZ	5/01-LB/OZ	5/03-LB/OZ	5/03-LB/OZ
Line Size - (in.) O.D. Gas ③	5/8	5/8	3/4	3/4
Line Size - (in.) O.D. Liquid ③	3/8	3/8	3/8	3/8
Dimensions H x W x D (Crated)	32-3/8 x 24-3/4 x 26-3/4	32-3/8 x 24-3/4 x 26-3/4	32-3/8 x 24-3/4 x 26-3/4	32-3/8 x 24-3/4 x 26-3/4
Weight - Shipping	161	161	170	152
Weight - Net	140	140	149	131
Sound Level [dB(A)]	72	72	77	77
Start Components	NO	NO	NO	NO
Sound Enclosure	NO	NO	NO	NO
Compressor Sump Heat	NO	NO	NO	NO
Optional Accessories: ④				
Evaporator Defrost Control	AY28X079	AY28X079	AY28X079	AY28X079
Start Kit	BAYKSKT260	BAYKSKT260	BAYKSKT260	BAYKSKT263
Crankcase Heater Kit	BAYCCHT300	BAYCCHT300	BAYCCHT300	BAYCCHT301
Low Ambient Kit ⑤	BAYLOAM103	BAYLOAM103	BAYLOAM103	BAYLOAM103
Refrigerant Lineset ⑥	TAYREFLN9*	TAYREFLN9*	TAYREFLN7*	TAYREFLN7*
Extreme Conditions Mount Kit	BAYECMT021	BAYECMT021	BAYECMT021	BAYECMT021

① Certified in accordance with the Unitary Air-Conditioner equipment certification program which is based on AHRI Standard 210/240.

② Calculated in accordance with N.E.C. Only use HACR circuit breakers or fuses.

③ Standard line lengths - up to 60' Standard lift - 100' Suction and Liquid line.

If OD unit is located above ID unit - up to 200' Lift - up to 200' Suction and Liquid line length.

④ For accessory description and usage, see page 5.

⑤ For applications requiring the BAYLOAM103, an 8 X 8 weatherproof electrical enclosure is required in order to locate the low ambient controller external to the unit.

⑥ * = 15, 20, 25, 30, 40 and 50 foot lineset available.

⑦ This system is shipped with a DRY NITROGEN charge and does not contain HCFC 22.



General Data

Product Specifications

Model No. ①	2TTM3042A1	2TTM3048A1	2TTM3060A1
Electrical Data V/Ph/Hz ②	208/230/1/60	208/230/1/60	208/230/1/60
Min Cir Ampacity	26.6	26.6	33.3
Max Fuse Size (Amps)	45	45	50
Compressor	CLIMATUFF® - SCROLL	CLIMATUFF® - SCROLL	CLIMATUFF® - SCROLL
RL Amps - LR Amps	19.9 - 104	19.9 - 104	25.3 - 146
Outdoor Fan FL Amps	1.7	1.7	1.7
Fan HP	1/3	1/3	1/3
Fan Dia (inches)	23	23	23
Coil	CLIMATUFF®	CLIMATUFF®	CLIMATUFF®
Refrigerant R-22 ⑦	4/10-LB/OZ	4/10-LB/OZ	4/10-LB/OZ
Line Size - (in.) O.D. Gas ③	7/8	7/8	7/8
Line Size - (in.) O.D. Liquid ③	3/8	3/8	3/8
Dimensions H x W x D (Crated)	32-3/8 x 29-3/4 x 30-1/2	32-3/8 x 29-3/4 x 30-1/2	32-3/8 x 29-3/4 x 30-1/2
Weight - Shipping	192	192	198
Weight - Net	169	169	175
Sound Level [dB(A)]	79	79	79
Start Components	NO	NO	NO
Sound Enclosure	NO	NO	NO
Compressor Sump Heat	NO	NO	NO
Optional Accessories: ④			
Evaporator Defrost Control	AY28X079	AY28X079	AY28X079
Start Kit	BAYSKT263	BAYSKT263	BAYSKT263
Crankcase Heater Kit	BAYCCHT301	BAYCCHT301	BAYCCHT301
Low Ambient Kit ⑤	BAYLOAM103	BAYLOAM103	BAYLOAM103
Refrigerant Lineset ⑥	TAYREFLN3*	TAYREFLN3*	TAYREFLN3*
Extreme Conditions Mount Kit	BAYECMT021	BAYECMT021	BAYECMT021

Accessory Description and Usage

Evaporator Defrost Control — SPST Temperature actuated switch that cycles the condenser off as indoor coil reaches freeze-up conditions. Used for low ambient cooling to 30°F.

Rubber Isolators — Use five (5) field supplied (1-1/2" maximum height) large rubber isolators (capable of withstanding the maximum weight of the unit) to isolate condensing unit from transmitting energy into mounting frame or pad. Use on any application where sound transmission needs to be minimized.

Start kit — Start capacitor and relay to assist compressor motor startup. Use in areas with marginal power supply, on long linesets, low ambient conditions, etc.

AHRI Standard Capacity Rating Conditions

AHRI STANDARD 210/240 RATING CONDITIONS —
 (A) Cooling 80°F DB, 67°F WB air entering indoor coil,
 95°F DB air entering outdoor coil.





Model Nomenclature

Outdoor Units

2 T T M 3 0 3 6 A 1 0 0 0 A A

Refrigerant Type
2 = R-22
4 = R-410A

TRANE

Product Type
W = Split Heat Pump
T = Split Cooling

Product Family
Z = Leadership – Two Stage
X = Leadership
R = Replacement/Retail
M or B = Basic
A = Light Commercial

Family SEER
0 = 10 3 = 13 6 = 16
1 = 11 4 = 14 8 = 18
2 = 12 5 = 15 9 = 19

Split System Connections 1-6 Tons
0 = Brazed

Nominal Capacity in 000s of BTUs

Major Design Modifications

Power Supply
1 = 200-230/1/60 or 208-230/1/60
3 = 200-230/3/60
4 = 460/3/60

Secondary Function

Minor Design Modifications

Unit Parts Identifier

High Efficiency Furnaces

T U D 1 B 0 8 0 A 9 H 3 1 A A

Furnace Configuration
TU = Upflow / Horizontal
TD = Downflow / Horizontal

Type
D = 80% Premium
X = 90% Premium

Number of Heating Stages
1 = Single Stage
2 = Two Stage
3 = Three Stage

Cabinet Width
A = 14.5" Cabinet Width
B = 17.5" Cabinet Width
C = 21.0" Cabinet Width
D = 24.5" Cabinet Width

Heating Input
080 = 80,000 BTUH

Major Design Change

Power Supply / Fuel
9 = 115 Volts / Natural Gas
F = 115 Volts / Natural Gas with Integrated iFD Filter

Airflow Capacity for Cooling
36 = 3 Ton Standard PSC Motor
H3 = 3 Ton High Efficiency Motor
V3 = 3 Ton Variable Speed Motor

Draft Inducer Speeds
1 = Single Speed
2 = Two Speed
V = Variable Speed

Minor Design Change

Service Digit – Not Orderable

Air Handlers- Residential

1 2 3 4 5 6 7 8 9 10 11 12 13 14 15
4 T E 3 F 3 6 A 1 0 0 0 A A

Refrigerant Type
4 = R-410A

Application
TE = Fully Convertible
TG = Semi Convertible
TF = Front Return
TB = Modular Blower

Product Family
E = Leadership - Variable Speed
H = High Efficiency
C = Replacement/Retail
B = Basic

Flow Control
0 = No Flow Control
3 = TXV-Non-bleed

Feature Identifier
0 = Standard Unit
F = Air-Tite™
D = Intergated Whole Home Air Cleaner
C = Communicating Air Handler

Nominal Capacity in 1000's (BTUH)

Major Design Change

Power Supply
1 = Single Phase

Electrical Connection
0 = Pig Tails
B = Circuit Breaker
D = Pull Disconnect

Future Option - Factory Installed Heater Nominal KW Value

Minor Design Change

Service Digit - Not Orderable

Heat Pump / Cooling Coils

2 T X C B 0 3 6 A C 3 H C A A

Refrigerant Type
2 = R-22 4 = R-410A

Product Family
T = Premium (Heat Pump or Convertible Coil)
C = Standard (Cooling Only)

Coil Design
X = Direct Expansion Evaporator Coil

Product Family
C = Cased A Coil
A = Uncased A Coil
F = Cased Horizontal Flat Coil

Coil Width (Cased / Uncased)
A = 14.5" / 13.3" C = 21.0" / 19.8" H = 10.5"
B = 17.5" / 16.3" D = 24.5" / 23.3"

Refrigerant Line Coupling
0 = Brazed

Nominal Capacity in 000s of BTUs

Major Design Change

Efficiency
C = Standard S = Hi Efficiency

Refrigerant Control
3 = TXV - Non-Bleed

Coil Circuitry
H = Heat Pump
C = Cooling Only

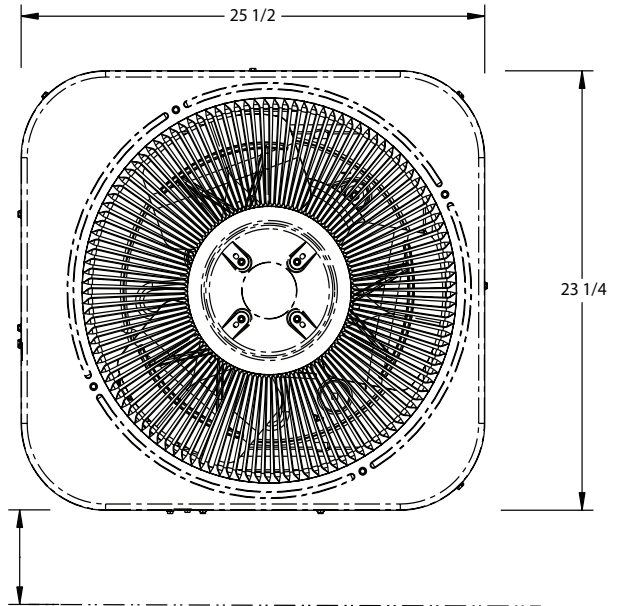
Airflow Configuration
A = Upflow Only
U = Upflow / Downflow
H = Horizontal Only
C = Convertible – Upflow, Downflow, Left Airflow
M = Convertible – Upflow, Downflow, Left or Right Airflow

Minor Design Change

Unit Parts Identifier

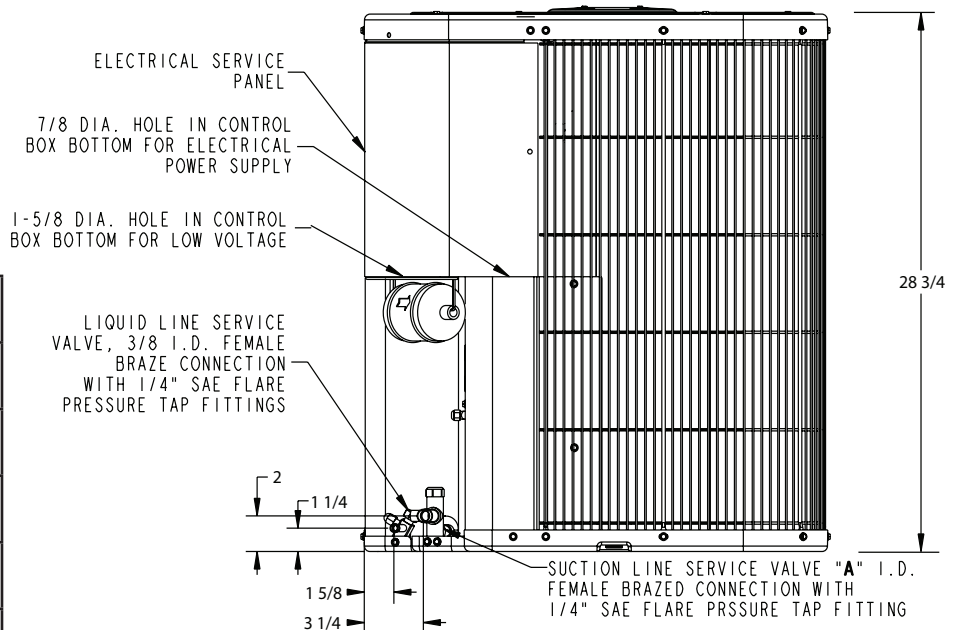
Dimensions

2TTM3 OUTLINE DRAWING



ELECTRICAL AND REFRIGERANT COMPONENT CLEARANCES PER PREVAILING CODES.

UNIT SHOULD BE PLACED SO ROOF RUN-OFF WATER DOES NOT POUR DIRECTLY ON UNIT, AND SHOULD BE AT LEAST 12" FROM WALL AND ALL SURROUNDING SHRUBBERY ON TWO SIDES. OTHER TWO SIDES UNRESTRICTED.



"A" (Suction Line Service Valve)	
2TTM3018A1000A	5/8
2TTM3024A1000A	5/8
2TTM3030A1000A	3/4
2TTM3036A1000A	3/4
2TTM3042A1000A	7/8
2TTM3048A1000A	7/8
2TTM3060A1000A	7/8

BASE 2
2TTM3018-036

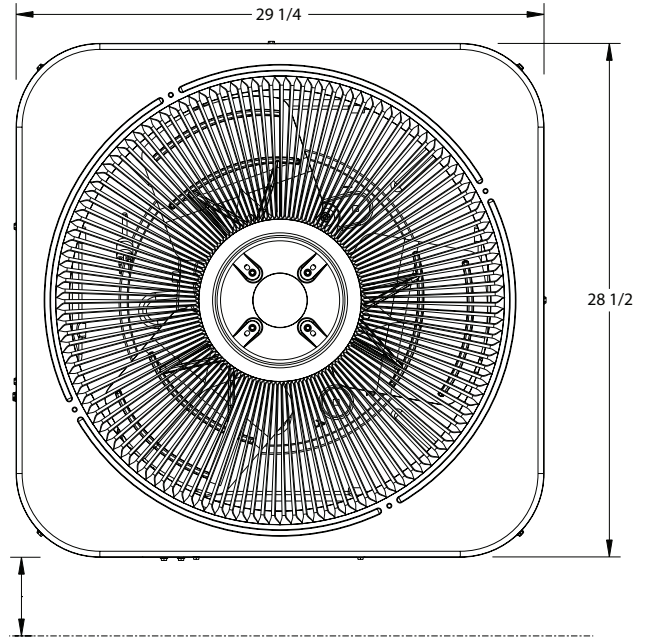


Dimensions

2TTM3 OUTLINE DRAWING

ELECTRICAL AND REFRIGERANT COMPONENT CLEARANCES PER PREVAILING CODES.

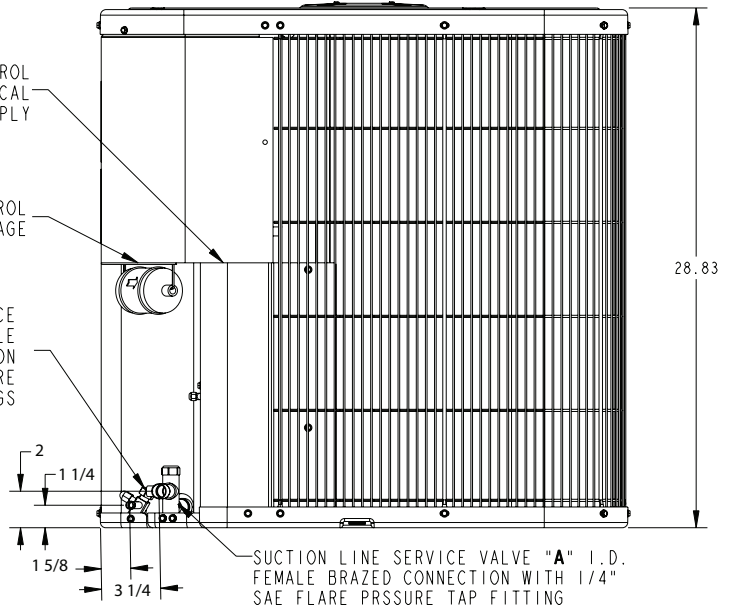
UNIT SHOULD BE PLACED SO ROOF RUN-OFF WATER DOES NOT POUR DIRECTLY ON UNIT, AND SHOULD BE AT LEAST 12" FROM WALL AND ALL SURROUNDING SHRUBBERY ON TWO SIDES. OTHER TWO SIDES UNRESTRICTED.



7/8 DIA. HOLE IN CONTROL BOX BOTTOM FOR ELECTRICAL POWER SUPPLY

1-5/8 DIA. HOLE IN CONTROL BOX BOTTOM FOR LOW VOLTAGE

LIQUID LINE SERVICE VALVE, 3/8 I.D. FEMALE BRAZE CONNECTION WITH 1/4" SAE FLARE PRESSURE TAP FITTINGS

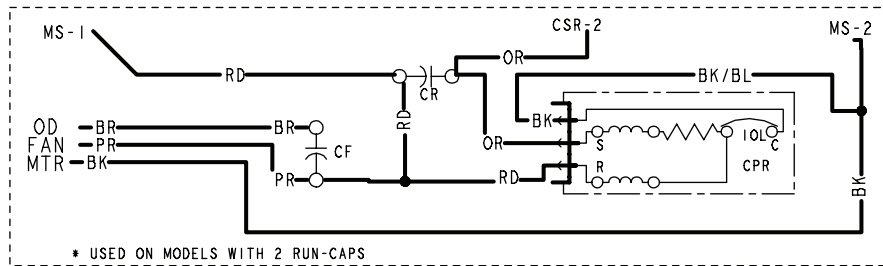
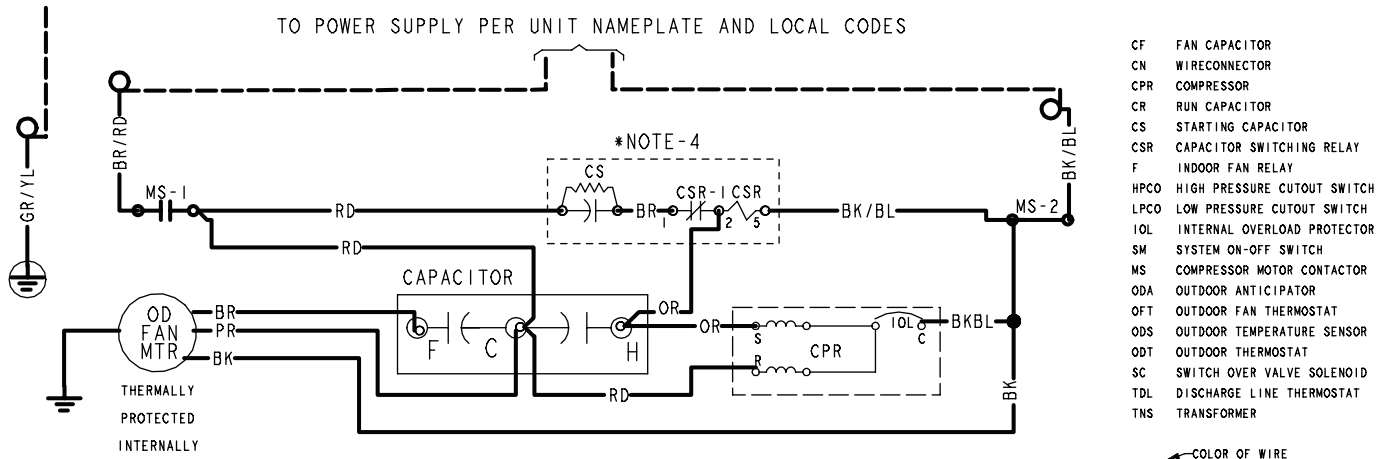


BASE 3
2TTM3042-060

"A" (Suction Line Service Valve)	
2TTM3018A1000A	5/8
2TTM3024A1000A	5/8
2TTM3030A1000A	3/4
2TTM3036A1000A	3/4
2TTM3042A1000A	7/8
2TTM3048A1000A	7/8
2TTM3060A1000A	7/8

From D156404REV02

Electrical Data



COLOR OF WIRE
 BK/BL COLOR OF MARKER

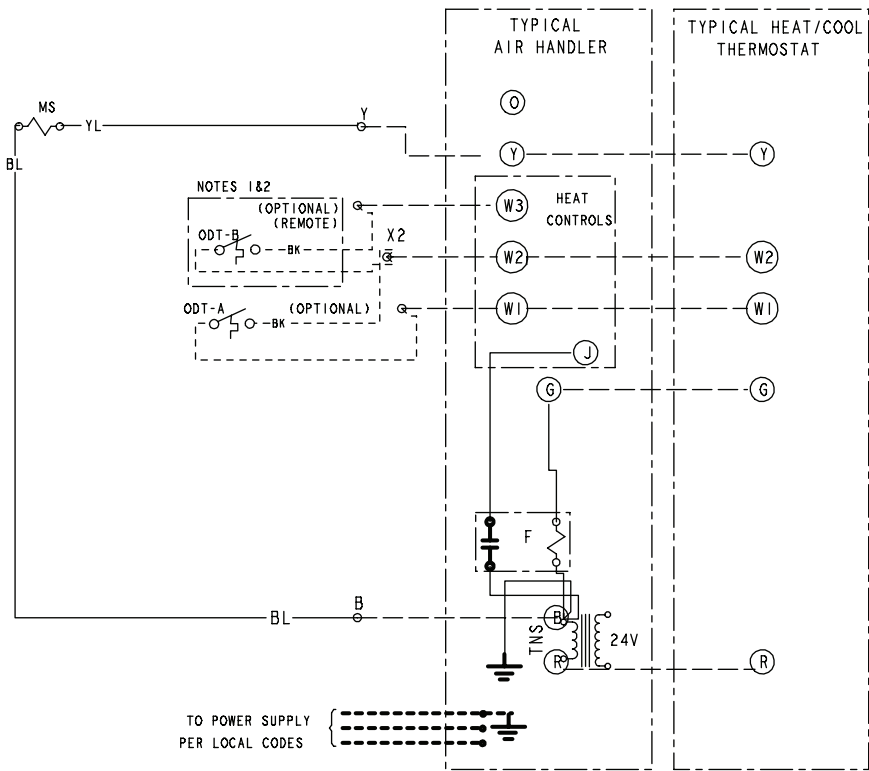
BK	BLACK	RD	RED	OR	ORANGE
BL	BLUE	WH	WHITE	GR	GREEN
BR	BROWN	YL	YELLOW	PR	PURPLE
PK	PINK				

WARNING

HAZARDOUS VOLTAGE!
 DISCONNECT ALL ELECTRICAL POWER INCLUDING REMOTE DISCONNECTS BEFORE SERVICING.
 Failure to disconnect power before servicing can cause severe personal injury or death.

CAUTION

USE COPPER CONDUCTORS ONLY!
 UNIT TERMINALS ARE NOT DESIGNED TO ACCEPT OTHER TYPES OF CONDUCTORS.
 Failure to do so may cause damage to the equipment.



- NOTES:
- IF ODT-B IS NOT USED. ADD JUMPER BETWEEN W2 & W3 AT AIR HANDLER. IF USED, ODT-B MUST BE MOUNTED REMOTE OF CONTROL BOX IN AN APPROVED WEATHER PROOF ENCLOSURE.
 - IF ODT-A IS NOT USED. ADD JUMPER BETWEEN W1 & W2 AT AIR HANDLER.
 - LOW VOLTAGE (24 V) FIELD WIRING MUST BE 18 AWG MIN.
 - NOT FACTORY INSTALLED; IF NEEDED USE BAYKSKT 260 FOR 2TTM3018, 24, 30 AND BAYKSKT 263 FOR 2TTM3036, 42, 48, 60.

FOR CANADIAN INSTALLATIONS
 POUR INSTALLATIONS CANADIENNES

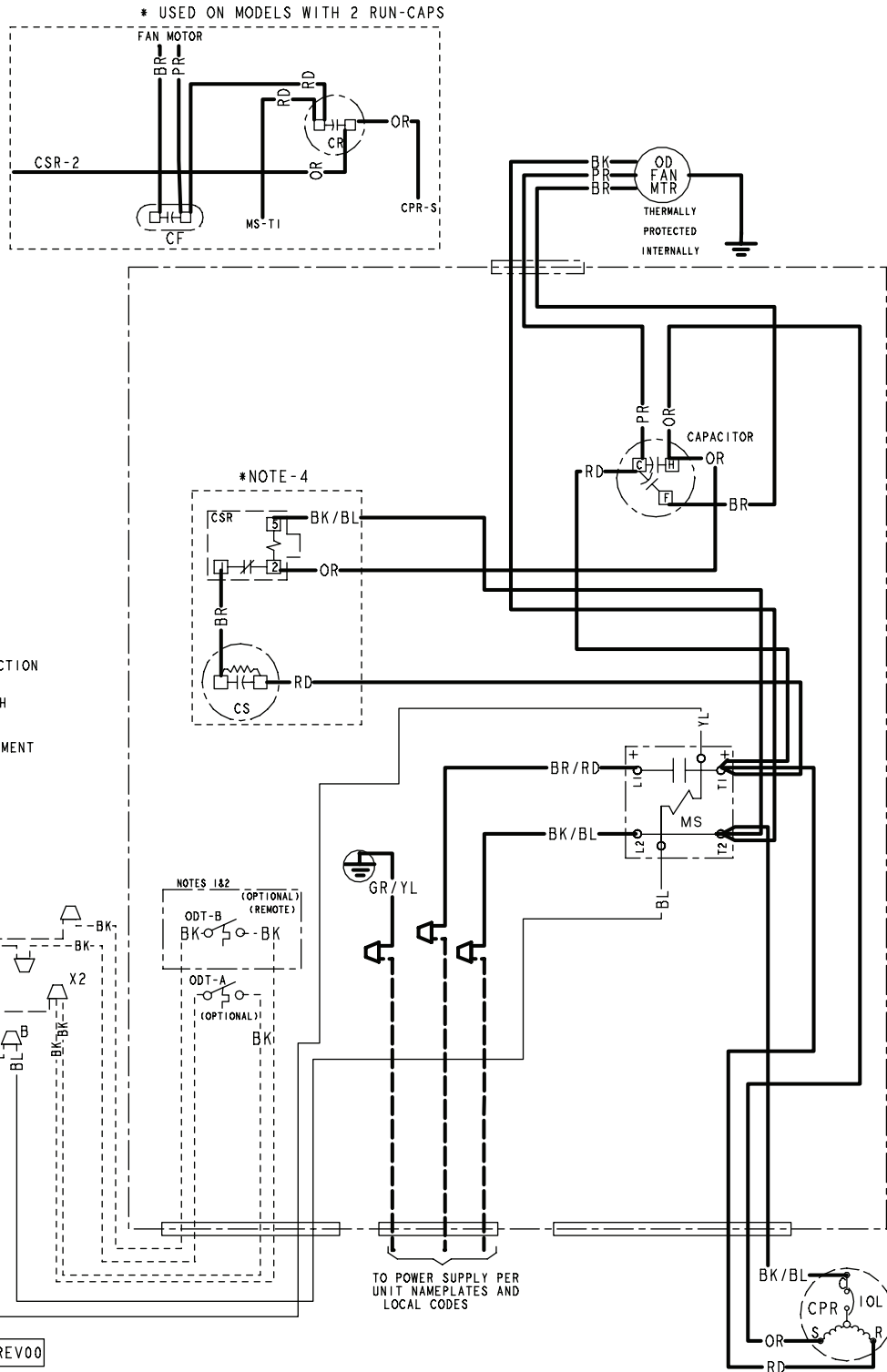
CAUTION: NOT SUITABLE FOR USE ON SYSTEMS EXCEEDING 150V-TO-GROUND
 ATTENTION: NE CONVIENT PAS AUX INSTALLATIONS DE PLUS DE 150 V A LA TERRE



Electrical Data

LEGEND

- 24 V } FACTORY WIRING
- LINE V } FIELD WIRING
- 24 V } FIELD WIRING
- LINE V } FIELD WIRING
- FIELD INSTALLED FACTORY WIRING
- MAGNETIC COIL
- GROUND
- JUNCTION
- CAPACITOR
- WIRE NUT OR TERMINAL
- TRANSFORMER
- FUSE
- TERMINAL BLOCK/BOARD
- RELAY CONTACT (N.O)
- RELAY CONTACT (N.C)
- THERMISTOR
- TIME DELAY RELAY
- TEMP ACTUATED SWITCH
- INTERNAL OVERLOAD PROTECTION
- PRESSURE ACTUATED SWITCH
- RESISTOR OR HEATING ELEMENT
- MOTOR WINDING
- POL. PLUG FEMALE HOUSING (MALE TERMINALS)
- POL. PLUG MALE HOUSING (FEMALE TERMINALS)



PRINTED FROM D157202P02 REV00



Mechanical Specification Options

General

The 2TTM3 is designed to operate at outdoor ambient temperatures as high as 115°F. Cooling capacities are matched with a wide selection of air handlers and furnace coils that are A.H.R.I. certified. The unit is certified to UL 1995. Exterior is designed for outdoor application.

Casing

The unit is constructed of heavy gauge, G90 galvanized steel and painted with a weather-resistant powder paint on the top, base & coil guard, prepaint on all other panels.

Refrigerant Controls

Refrigeration system controls include condenser fan and compressor contactor. High and low pressure controls are inherent to the compressor. A field installed liquid line drier is shipped with the unit.

Compressor

The Climatuff® compressor features internal over temperature and pressure protection and total dipped hermetic motor.

Time Delay Relay

The time delay relay prevents compressor short cycling and improves startability and reliability.

Condenser Coil

The outdoor coil provides low airflow resistance and efficient heat transfer.

Low Ambient Cooling

As manufactured, this unit has a cooling capability to 60°F. The addition of an evaporator defrost control permits low ambient cooling to 30° F. The addition of a low ambient kit allows operation down to 0° F.

Accessories

Thermostats — Cooling only and heat/cooling (manual and automatic change-over). Sub-base to match thermostat and locking thermostat cover.

Evaporator Defrost Control — See Low Ambient Cooling.





Trane
www.trane.com

02/12

Trane has a policy of continuous product and product data improvement and it reserves the right to change design and specifications without notice.